

SUPPLEMENTAL AIRPLANE MAINTENANCE MANUAL

DA 62

STC 62-002

ALTERNATIVE SEATING CONFIGURATION

This Supplemental AMM is approved and is valid in conjunction with the basic Airplane Maintenance Manual (AMM).

The limitations and information contained herein either supplement or in case of conflict, override those in the AMM.

Doc. No. : 7.02.25-STC 62-002

Date of Issue : 17-Mar-2020

This document must be carried in the Airplane Maintenance Manual (AMM) at all times. It describes the maintenance procedures.

The technical information contained in this document has been approved under the authority of DOA No. EASA.21J.052.

DIAMOND AIRCRAFT INDUSTRIES GMBH
N.A. OTTO-STR. 5
A-2700 WIENER NEUSTADT
AUSTRIA

Intentionally left blank

Record of Revision

Rev. No.	Reason	Chapter	Page(s)	Date of Revision	Approval Note	Date of Approval	Date Inserted	Signature
1	STC 62-001/d	All	All, except cover page	11-Feb-2022	Rev. 1 to AMM Supplement STC-62-002 to AMM Doc. No. 7.02.25 is approved under the authority of DOA ref. EASA.21J.052	07-Mar-2022		

I

Intentionally left blank

FOREWORD

This document is protected by copyright. All associated rights, in particular those of translation, reprinting, radio transmission, reproduction by photo-mechanical or similar means and storing in data processing facilities, in whole or part, are reserved.

Copyright © by: DIAMOND AIRCRAFT INDUSTRIES GMBH
Nikolaus-August-Otto-Strasse 5
2700 Wiener Neustadt, Austria
Phone : +43-2622-26700
Fax : +43-2622-26780
E-Mail : office@diamondaircraft.com

Any occurrence related to this STC shall be reported in writing to the address above or submitted to E-Mail: airworthiness-austria@diamondaircraft.com

I

Intentionally left blank

I

CHAPTER 3
GENERAL DESCRIPTION OF THE AIRPLANE

| The 3-seat bench passenger row is replaced by 2 separate seats. These seats provide improved passenger comfort with increased spacing and adjustable backrests.

| Optional center consoles can be installed between the two seats.

| Two versions of center consoles are available:

| The Module STC 62-002-M010 "Business Console" has an upward foldable armrest with a storage box for small items underneath.

| The Module STC 62-002-M020 "MPP Console" is designed for the use in airplanes with STC 62-001 installed. It is prepared for the installation of Mission Equipment.

| This supplemental AMM provides instructions for Continued Airworthiness related to this STC.

Intentionally left blank

CHAPTER 11
PLACARDS AND MARKINGS
Section 11-30
Interior Placards and Markings

Description

The following placards are installed on the cabin walls, opposite and in close proximity of the Passenger row I seats backrests upright position.

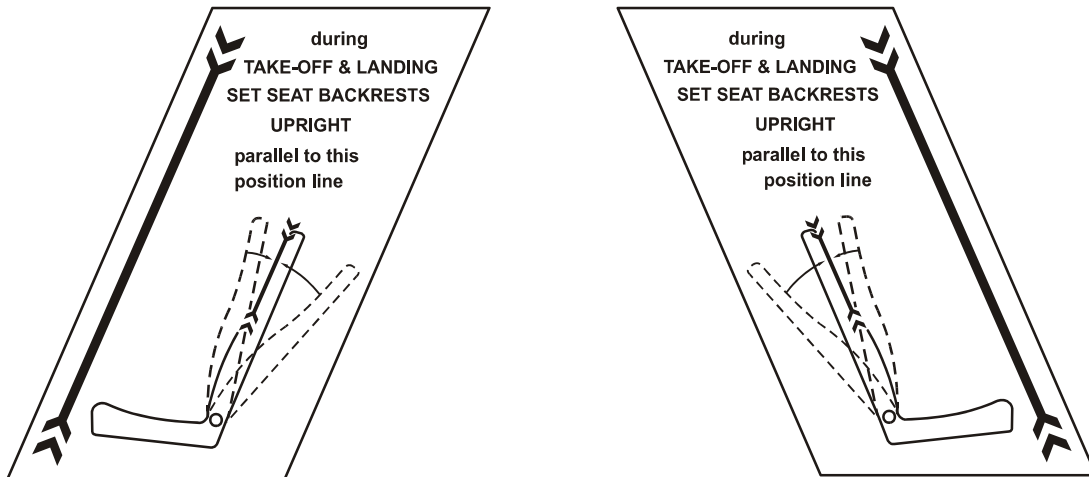


Figure 1: Interior Placards, Passenger Seats Row I

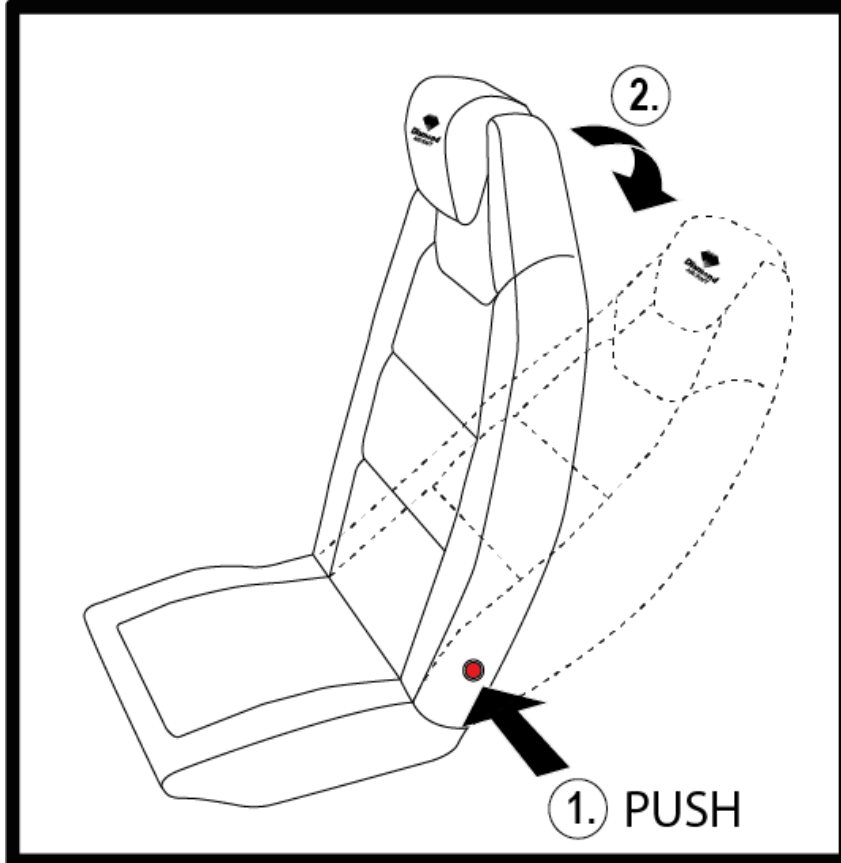


Figure 2: Interior Placards, Passenger Seats Row I Pushbuttons

CHAPTER 25 **EQUIPMENT FURNISHINGS**

General

The front seats and the passenger row I seats have adjustable backrests installed. The angle of the backrests and the lumbar can be adjusted for best comfort. The backrest adjustment knob is situated on the side of the backrest.

During take-off, landing and emergency landing the backrests must be fixed in the upright position designated by placards.

The lumbar support can be adjusted by operating the lumbar support lever support lever. The lumbar support lever is mounted on the right side of the seat pan.

In case of an emergency, to allow easy egress from the passenger row II, the passenger row I seat backrests can be adjusted backward operating the adjustment knob. The knobs for adjusting the backrests are easily accessible from the passenger row II. The use of the knobs is placarded.

The seat backrests can be released for easier access to passenger row II (if OÄM 62-019 is installed) or to the baggage compartment.

Optional center consoles can be installed between the two seats.

Two versions of center consoles are available:

The Module STC 62-002-M010 "Business Console" has an upward foldable armrest. Under the armrest is a storage box for small items like two drinking bottles or cell phones and pens. A foam insert keeps the items in position. In front of the armrest a foam insert serves as cup holder.

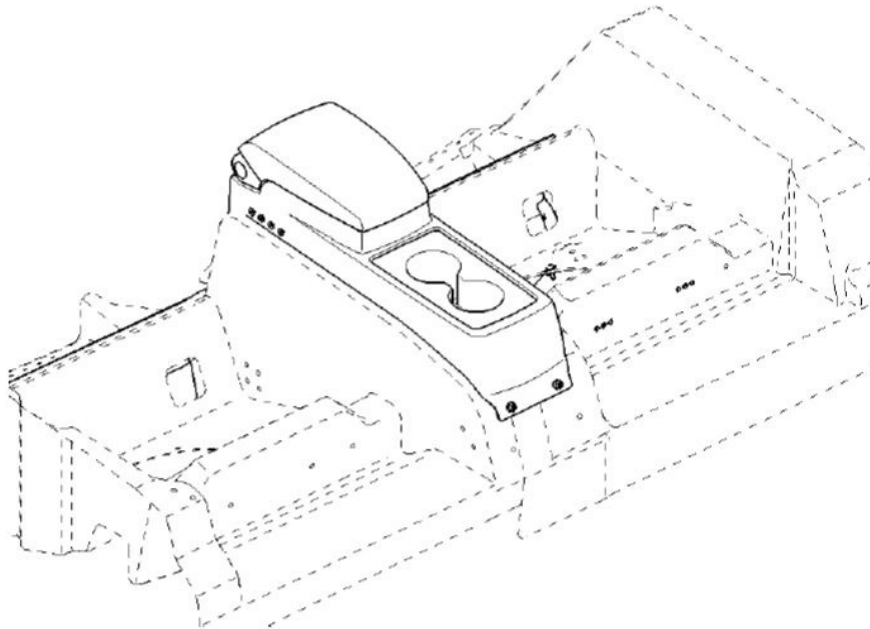


Figure 3: Business Console

The Module STC 62-002-M020 "MPP Console" is designed for the use in airplanes with STC 62-001 installed. It is prepared for the installation of Mission Equipment. Space not used for equipment must be closed with blanking plates. The installation of additional equipment must be certified with a separate airworthiness approval.

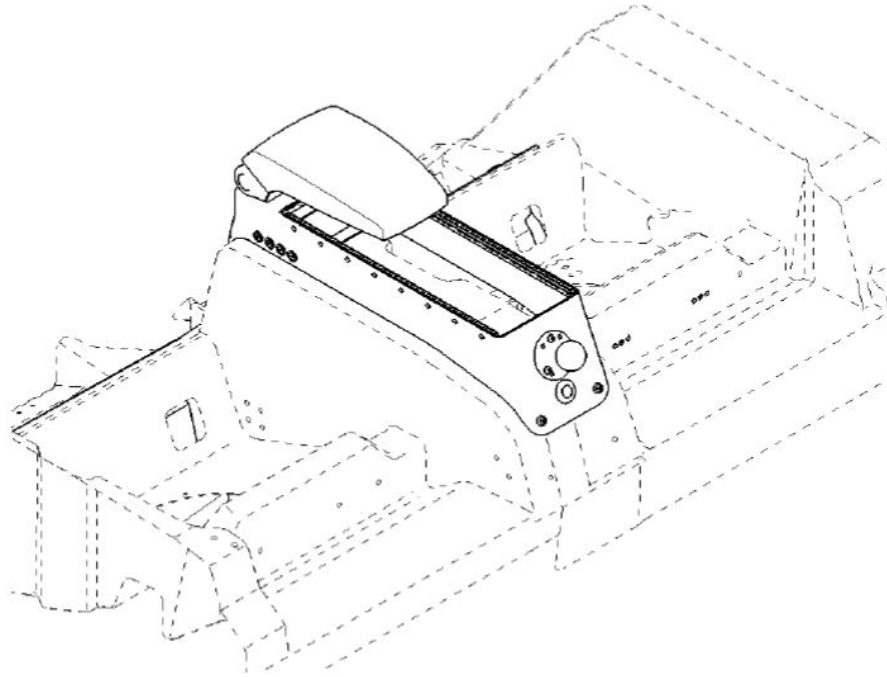


Figure 4: MPP Console

Section 25-10
Flight Compartment

General

Passenger row I of the DA 62 has two fixed seats.

The two passenger seats of the passenger seats row I are equipped with adjustable backrests.

Description and Operation

A. Passenger Seats in Passenger Seat Row I

The passenger seat row I is equipped with two seats with adjustable backrests. The function and the design are highly similar to the RH Pilot seat. Both passenger seats are attached to an interface shell. The attachment is similar to the attachment of the pilot seats. An access panel under the seat cushion allows access to the access cover in the interface element below. This allows to inspect systems and other elements below the seats and below the interface shell.

The seat backrests can be released for easier access to passenger row II (if OÄM 62-019 is installed) or to the baggage compartment.

For function und handling of the seats of passenger row I refer to the basic AMM Doc. No. 7.02.25, Pilots' Seats with adjustable backrest.

B. Interface Shell and Crash Elements

The LH and the RH Interface Shell are attached to the Fuselage structure. The rearward connection of the interface shell is attached to three identical Aluminum Brackets. These Bracket are attached with the rearward row of bolts of the Center Wing - Fuselage connection. On the front the connection outboard is using the regular seat bench attachment brackets. Inboard each Interface Shell is bolted to a CFRP- bracket. The two CFRP-brackets are bonded to the rear spar. In addition each interface shell has two attachments in the interface pan. The outboard attachment is a vertical bolt with an anchor nut underneath. The inboard attachment are four bolts attached to an aluminum bracket.

Each seat is supported by two crash elements made of rigid foam. The crash elements are bonded to the interface shell. In case of an accident the foam can absorb energy and thus reduce loads on the passengers.

Maintenance Procedures for the Passenger Seat

Note: The passenger seats in passenger row I are RH pilot seats with adjustable backrests. The passenger seats are attached to the interface shell in the same manner as the pilots' seats to the airframe structure. The maintenance procedures of the pilot seats with adjustable backrest must be followed (see paragraphs in this chapter).

For maintenance practices refer to the DA 62 AMM Doc. No. 7.02.25 and use the procedures for the pilots seat for the following maintenance tasks:

- Remove/Install a Seat
- Test and Integration Procedures for Seats with Adjustable Backrests
- Remove/install a Seat's Access Panel
- Disassemble/Assemble the Adjustable Backrest Mechanism
- Remove/Install a Safety Harness
- Cleaning

Intentionally left blank

1. Remove/Install an Interface Shell for the Passenger Seats Row I

A. Remove an Interface Shell from the Airplane

	Detail Steps/Work Items	Key Items/References
	<p>CAUTION: DO NOT PRESS THE PUSH BUTTON FOR THE ADJUSTABLE BACKREST OF THE SEATS UNINTENTIONALLY. THE SPRING LOADED BACKREST MAY SNAP FORWARD AND CAN CAUSE INJURY.</p> <p>Note: When Module STC 62-002-M010 "Business Console" or Module STC 62-002-M020 "MPP Console" is installed the console must be removed first by following the instructions for removing a center console.</p>	
(1)	Remove the seat from the interface shell.	Refer to: Remove/Install the Seat.
(2)	Remove 3 x 4 Phillips Head screws at the 3 rear brackets.	
(3)	Remove 1 vertical hexagon screw in the shell pan.	
(4)	Remove 4 hexagon screws on the side wall of the shell pan.	
(5)	Remove 2 hexagon screws on the front/outboard side of the interface shell.	
(6)	Remove 2 hexagon screws on the front/inboard side of the interface shell.	
(7)	Lift the interface shell in an upward/inboard motion.	

B. Install an Interface Shell to the Airplane

	Detail Steps/Work Items	Key Items/References
	<p>CAUTION: DO NOT PUSH THE BUTTON FOR THE ADJUSTABLE BACKREST OF THE SEATS UNINTENTIONALLY. THE SPRING LOADED BACKREST MAY SNAP FORWARD AND CAN CAUSE INJURY.</p> <p>Note: When Module STC 62-002-M010 "Business Console" or Module STC 62-002-M020 "MPP Console" is installed the console must be re-installed after the installation of the interface shell by following the instructions for installing a center console.</p>	
(1)	Insert the interface shell in a downward/outboard motion.	
(2)	Insert 2 hexagon screws on the front/inboard side of the interface shell.	
(3)	Insert 2 hexagon screws on the front/outboard side of the interface shell.	
(4)	Install 4 hexagon screws on the side wall of the shell pan.	
(5)	Insert 1 vertical hexagon screw in the shell pan.	
(6)	Insert 3 x 4 Phillips Head screws at the 3 rear brackets with dimpled washers.	
(7)	Tighten all bolts (2) to (6).	Use standard torque.
(8)	Install the seat to the interface shell.	Refer to: Remove/Install the Passenger Seat.

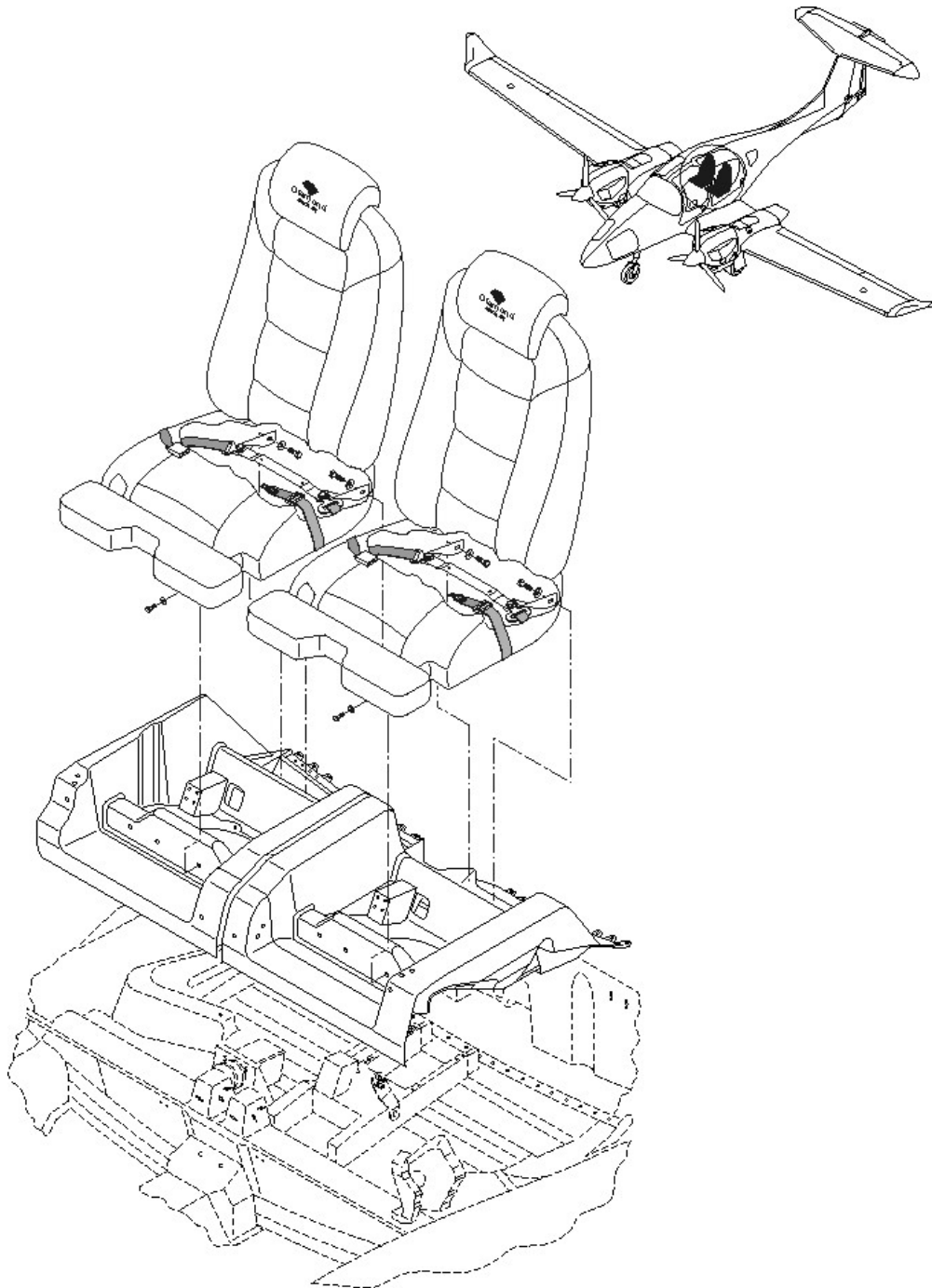


Figure 5: Interface Shell for the Passenger Seats Row I

2. Remove/Install a Center Console from the Interface Shell

A. Remove a Center Console from the Interface Shell from the Airplane

	Detail Steps/Work Items	Key Items/References
(1)	Remove 4 torx screws of the RH side wall of the center console.	
(2)	Remove 4 torx screws of the LH side wall of the center console.	
(3)	Remove 2 torx screws with finishing washer of the rear end of the center console.	
(4)	Remove 2 torx screws with finishing washer of the front end of the center console.	
(5)	Lift the center console.	
(6)	Remove 8 hexagon screws from the mounting bracket.	
(7)	Remove the mounting bracket.	

B. Install a Center Console to the Interface Shell

	Detail Steps/Work Items	Key Items/References
(1)	Position the mounting bracket.	
(2)	Install 8 hexagon screws to the mounting bracket. Tighten the screws.	
(3)	Check area under the interface shells for foreign objects.	
(4)	Position the center console.	
(5)	Install 2 torx screws with finishing washer on the front end of the center console.	
(6)	Install 2 torx screws with finishing washer on the rear end of the center console.	
(7)	Install 4 torx screws on the LH side wall of the center console.	
(8)	Install 4 torx screws on the RH side wall of the center console.	
(9)	Tighten the 12 screws (5) through (8).	

Intentionally left blank